

## Modulating Larger Butterfly Valve Actuators

### Features

- Maintenance free
- IP65 Protection
- Adjustable stops



### Specification

#### Output torque:

VB-NUCOM10NS-15	49Nm
VB-NUCOM10NS-30	98Nm
VB-NUCOM10NM-15	196Nm

Power supply 230Vac

#### Power consumption:

VB-NUCOM10NS	80W
VB-NUCOM10NM	200W

Input signal 4-20mA

Manual operation By detachable crank handle

Conduit entry 2 x G1/2"

Cable gland 1 x Cable dia. 6.5 - 10.5.

Protection IP65

Material Die cast aluminium

Fluid temperature 65°C max.

Ambient range -25 to 55°C

Country of origin Japan

### Product Codes

#### **VB-NUCOM10NS-15-230**

49Nm, 230Vac 4-20mA Modulating actuator

#### **VB-NUCOM10NS-30-230**

98Nm, 230Vdc 4-20mA Modulating actuator

#### **VB-NUCOM10NM-15-230**

196Nm, 230Vac 4-20mA Modulating actuator

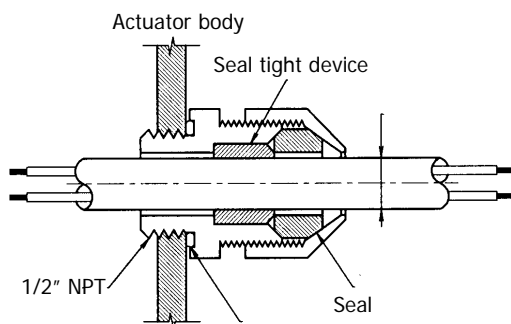
## Technical Overview

The VB-NUCOM10 range of rotary actuators are suitable for the VB-W range of butterfly valves from 150mm.

It is a compact and powerful unit with a manual override lever and 4-20mA feedback fitted as standard.

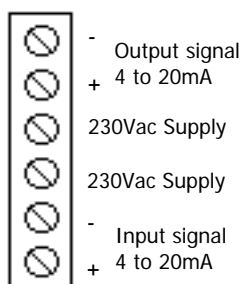
## Installation

1. The VB-NUCOM10 should only be installed by a competent, suitably trained technician, experienced in installation with hazardous voltages. (>50Vac & <1000Vac or >75Vdc & 1500Vdc).
2. This product is not explosion proof. Do not use in the environment with flammable gas (gasoline etc.) or corrosive gas.
3. Do not dismantle the actuator from the valve during power operation.
4. If the actuator is being installed outdoors, then shade the unit from direct sunlight, that may cause the actuator to overheat and become defective.
5. Use cable 9 to 11mm to prevent water ingress.

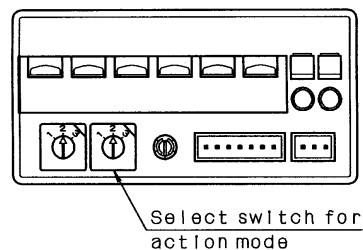


6. It is recommended that a fuse or circuit breaker is installed for protection, a 5A (NS) or 7A (NM) is recommended by the manufacture.

## Connections



## Direction Mode



1 = Direct action

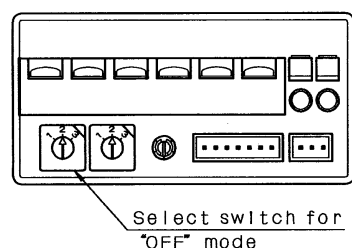
20mA Close

4mA Open

2 = Reverse action

4mA Close

20mA Open

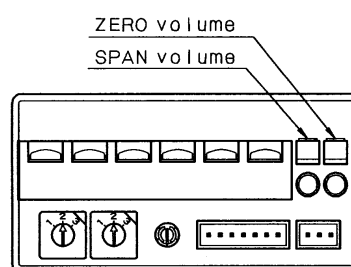


1 = Open action

2 = Stop action

3 = Close action

## Zero/Span Setting



\* ZERO volume

CW = To increase (to OPEN direction)

Adjustable range - 25 ~ +25 %

\* SPAN volume

CW = To increase (to OPEN direction)

Adjustable range - 50 ~ +200 %

## Span/Zero Setting (continued)

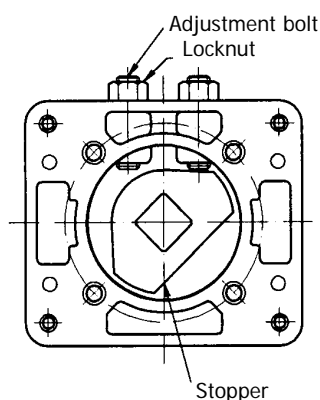
\*Zero/Span volumes are appropriately adjusted before shipment.

Do not adjust it after shipment unless imperatively required. For adjustment, use a trimmer driver of less than 300 g/cm torque, for an excessive force may cause a trouble.

\*First adjust Zero, then adjust Span based on the Zero rate.

## Mechanical Stop

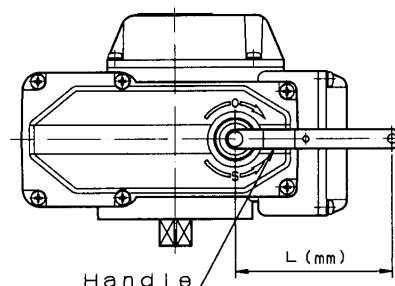
1. Open the valve fully by manual handle.
2. Loosen, and return the stop by 1/2 turn with the adjuster bolt.
3. Screw up the locknut.
4. Adjust close side in the same manner. Adjustment is now over.



## Manual operation

1. Cut power off before making manual operation.
2. Insert the manual handle into the hexagonal hole underneath the rubber cap.
3. Turn the handle clockwise for close, counter clockwise for open.
4. Note: The limit switches become effective at open/close of position meter. The stops are at 1/2 turn beyond those points. Do not apply excessive force to the handle, for it might damage the unit.

## Manual Operation (continued)

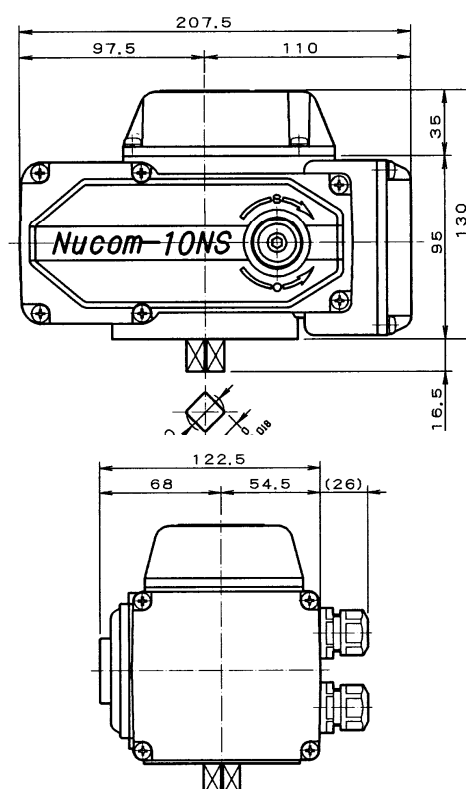


## Caution

When making manual operation, ensure that power is off. If power is on while manual operation, the handle will suddenly return!

## Dimensions

VE-NUCOM10NS:



## Dimensions (continued)

VB-NUCOM10NM:

